

# TRIMBLE FIELDLEVEL II SYSTEM FOR WATER MANAGEMENT

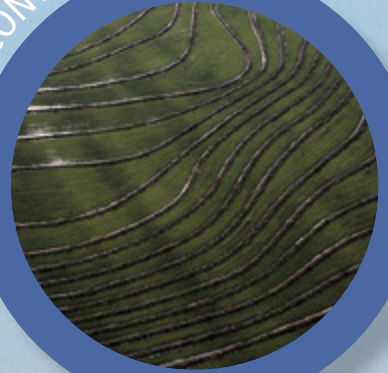
LAND LEVELING




FARM DRAINAGE



CONTOURING





## Water Management Solutions from Trimble

Water is one of nature's most precious resources, and one that farmers worldwide must utilize effectively in order to meet the ever-increasing demand for food. The AgGPS® FieldLevel II system is Trimble's most accurate water management system, utilizing GPS signals for land leveling, farm drainage and contouring.

As much as seventy percent of the world's fresh water is used for agriculture purposes. Products like the FieldLevel II system that can minimize water costs and efficiently distribute water by maintaining grade, are critical for water preservation. In addition, Trimble's data collection technologies allow for fast, precise, topographic mapping of any field for use in creating cut and fill analysis or farm drainage designs in the cab.

Your investment in Trimble water management technology can also be leveraged over other agriculture solutions, such as precision guidance, seeding, and flow and application control. This cross-functional utility means you get more from your investment.

Trimble has 25 years of experience in the water management business and our systems are proven to improve yields by 25%, and reduce water usage by 30%. Because Trimble knows every dollar – and every drop – counts.

# TRIMBLE LAND LEVELING

LAND LEVELING

The Trimble® FieldLevel II system provides the complete solution for surveying, designing and leveling field surfaces to ensure optimal water management. It provides vast improvements in yields, water usage, and farm productivity.



## Survey

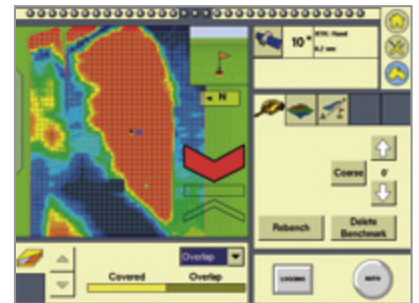
- Map your fields with precision RTK measurements to provide optimal field coverage and ensure the most accurate field surface drainage designs.
- Create boundaries, interior points, and surfaces with ease.
- Calculate and report on the true acreage of your survey area.

## Design

- Create a best-fit surface using Autoplane technology based on your survey, prescribed slopes, and cut and fill balance requirements.
- Define primary and cross slopes for your prescribed orientation and grades, allowing you to easily touch up fields that have previously been leveled.
- Utilize the benefits of Multiplane design software for more complex field requirements, and seamlessly transfer data back to your FieldLevel II system.

## Level

- Drive the scraper hydraulic valves automatically to move the optimal amount of dirt across your fields.
- Level your fields using any make and model of tractor and scraper.
- Operate both tandem and dual scraper systems to increase your productivity when leveling your fields.



# TRIMBLE FARM DRAINAGE

## FARM DRAINAGE

The Trimble FieldLevel II system includes the Autoslope function which provides a complete solution for installing both sub-surface drainage and surface ditches. Survey, design, and install your drainage system from the seat of your cab.

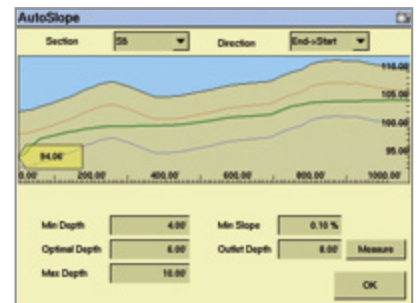


### Survey

- Utilize the section line function which provides a simple method of driving the alignment where you wish to install tile or clean a surface ditch.
- Autoslope functionality is flexible enough to allow you to perform a survey/install workflow on each alignment, or survey all your alignments at once and install later.

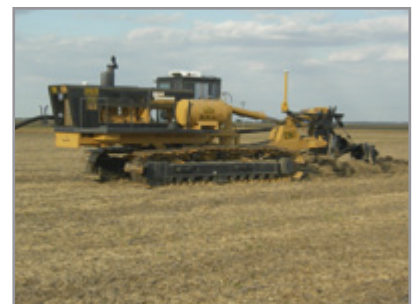
### Design

- Ensure that the tile or ditch profile is designed to your requirements at the right slope and the right depths using built-in algorithms.
- Control the design by constraining minimum slope, minimum depth, maximum depth, optimal depth, and outlet depth, to ensure that the system designs the profile to your exact soil and slope requirements.
- View your profile before installation to see where constraints could not be met due to the vertical alignment of the land. Easily adjust your constraints to allow the tile or ditch design to fit.



### Install

- Automatically control the depth of the tile plow as you move along the section line to ensure the pipe is installed correctly. Alternatively, use Autoslope with a scraper and allow the system to control the blade to your surface ditch design.
- Utilize the virtual lightbar, or the LB25 remote lightbar, to guide you on the profile that you surveyed.
- Install tile or perform surface ditching using any machine configuration.
- Install your tile or clean your surface ditch in either direction.



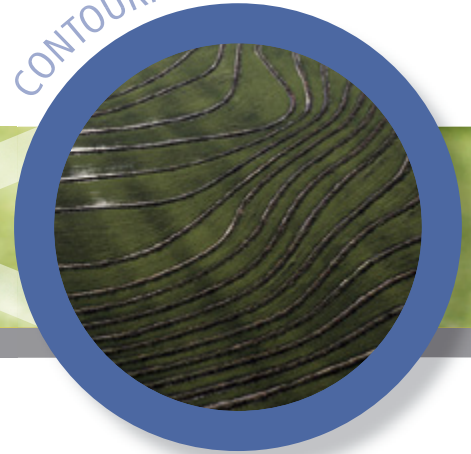
### Point and Slope

- For an alternative method of installing tile or cutting a surface ditch, simply key a slope and drive the machine.
- Break grade or offset the blade on the fly.



CONTOURING

The Trimble FieldLevel II system provides the most simple and accurate way to mark levees along a contour, allowing your rice field to be watered perfectly while using the absolute minimum amount of water.



## Contour

- Define the start point of your levee, and then allow the Trimble lightbar to guide you left or right to assist you in marking perfect levees along the contour.
- Decrease the time and difficulty associated with marking a levee by changing the blade step up or down as you move from one contour to another.
- Increase your productivity 30% or more by using the FieldLevel II system instead of traditional laser methods.
- Using Trimble high accuracy RTK GPS means that you are setting levees on an uniformly potential surface, rather than the flat plane surface you get with lasers. This means that the Earth's curvature does not negatively impact the accuracy of your levees.
- Eliminate distance restrictions and wind interference by replacing lasers and implementing the FieldLevel II system with RTK into your levee marking projects.
- Trimble RTK tracks both GPS and GLONASS satellites, providing you with greater stability, higher RTK performance, and a more reliable levee marking system.



# FIELDLEVEL II SYSTEM COMPONENTS



## AgGPS FmX™ Integrated Display

- **Optimal FieldLevel II system with cross functional capability**  
Can be used for all your precision agriculture applications, including guidance, mapping, and flow and application control
- **Dual built-in GPS+GLONASS receivers**  
Connect to single or dual scrapers with no need for external GPS receivers
- **Upgradable to receive GLONASS signals**  
The addition of GLONASS and L2C signals gives the FmX integrated display excellent performance in tough satellite environments and areas with intermittent periods of GPS signal availability
- **Integrated radio for RTK connections**
- **Large 12.1"/30.73 cm color touch screen**
- **Supports LB25 remote lightbars offering you a more flexible in-cab solution**
- **Increase your productivity by using the Trimble AgGPS Autopilot™ automated steering system in conjunction with your FieldLevel II system**

## AgGPS 442 Base Station

- **With advanced 72 channel L1/L2/L2C/GLONASS/RTK capabilities, the 442 receiver is an excellent high accuracy RTK receiver for your mobile FieldLevel II base station**
- **The integrated display and keypad gives you quick access to configuration and the Autobase process for a quick and easy way to start your base station**
- **Provide your FieldLevel II system with repeatable year-to-year base station accuracy**
- **Built-in radio allows for a fast and easy base station setup**



### NORTH & SOUTH AMERICA

#### Trimble Agriculture Division

10355 Westmoor Drive, Suite #100  
Westminster, CO 80021

USA

800-865-7438 Phone (US Toll Free)

+1-913-495-2700 Phone

+1-913-495-2750 Fax

#### Trimble Navigation Limited

Corporate Headquarters

935 Stewart Drive

Sunnyvale, CA 94085

USA

+1-408-481-8000 Phone

+1-408-481-7740 Fax

### EUROPE

#### Trimble GmbH

Am Prime Parc 11

65479 Raunheim

GERMANY

+49-6142-2100-226 Phone

+49-6142-2100-140 Fax

### ASIA-PACIFIC

#### Trimble Navigation Australia PTY Limited

Level 1/120 Wickham Street

Fortitude Valley, QLD 4006

AUSTRALIA

+61-7-3216-0044 Phone

+61-7-3216-0088 Fax